

UMBW

Miniature Circuit Breakers

Accessories & Technical Data

Auxiliary Contacts- Signaling contacts that open and close with the breaker. Provide remote status indicatin ON and OFF only.

For Use With	Catalog Number	Operating Voltage	Operating Amperage	Contacts	Mounting/Dims (mm)	Mechanical Operations	Torque	Mass	QTY		Multiplier
UMBW-1 UMBW-4	UMBW-AUX	12-240VAC	6A	1NO/1NC	Field Mountable..Left Side/ 9mm	20,000	1 Nm .74 Ft. lbs.	29g	1		Z12
		277VAC	3A								
		12-24VDC	6A								
		48VDC	3A								
		110-220VDC	1.5A								

Bell Alarm- Provides provisions for visual and alarm indication when the breaker in the Tripped status, due to Short Circuit, Overload or Undervoltage. Breaker must be re-set to open contacts.

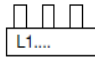
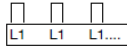
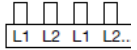
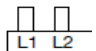
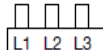
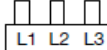
For Use With	Catalog Number	Operating Voltage	Operating Amperage	Contacts	Mounting/Dims (mm)	Mechanical Operations	Torque	Mass	QTY		Multiplier
UMBW-1 UMBW-4	UMBW-BAC	12-240VAC	6A	1NO/1NC	Field Mountable..Left Side/ 9mm	10,000	1 Nm .74 Ft. lbs.	29g	1		Z12
		277VAC	3A								
		12-24VDC	6A								
		48VDC	3A								
		110-220VDC	1.5A								

Shunt Trip- Provides ability to trip breaker from remote location when power is applied.

For Use With	Catalog Number	Voltage/Min Trip Voltage	Amperage/ Power Consumption	Contacts	Mounting/Dims (mm)	Mechanical Operations	Torque	Mass	QTY		Multiplier
UMBW-1 UMBW-4	UMBW-ST12DC	12 VDC/ 8VDC	6A/ 200W	1NO/1NC	Field Mountable..Left Side/18mm	20,000	1Nm, .74ft lbs	60g	1		Z12
	UMBW-ST24DC	24 VDC/ 16VDC	6A/ 200W								
	UMBW-ST48DC	48 VDC/ 24VDC	2A/ 200W								
	UMBW-ST125DC	125 VDC/ 80VDC	1.5A/ 200W								
	UMBW-ST120AC	120 VAC/ 80VAC	6A/ 200W								
	UMBW-ST240AC	240 VAC/ 160VAC	6A/ 200W								
	UMBW-ST277AC	277 VAC/ 160VAC	3A/ 200W								

Miniature Circuit Breakers

Bus Bar Accessories

For Use With	Catalog Number	AMP Rating End/Center	Number of Poles	Max Voltage	Length (mm)	QTY		End Cap Catalog Number (Sold as Separate Item)	QTY		Multiplier
1 Pole											
UMBW-1	UMBW-BB-1-1 	80A/160A	57	600 AC /1000 DC	1009	1		UMBW-BB-1-1P-END CAP	10 (Sets of 2pcs)		Z12
UMBW-4	UMBW-BB-4-1	80A/160A	57	1000 AC/DC	1031	1		UMBW-BB-4-END CAP	10		
1 Pole with Auxiliary											
UMBW-1	UMBW-BB-1-1A 	80A/160A	37	600 AC /1000 DC	985	1		UMBW-BB-1-1P-END CAP	10 (Sets of 2pcs)		Z12
UMBW-4	UMBW-BB-4-1A	80A/160A	37	1000 AC/DC	972	1		UMBW-BB-4-END CAP	10		
2 POLE											
UMBW-1	UMBW-BB-1-2 	80A/160A	56	600 AC/DC	991	1		UMBW-BB-1-2/3P-E CAP	10 (Sets of 2pcs)		Z12
UMBW-4	UMBW-BB-4-2	80A/160A	56	600 AC/DC	979	1		UMBW-BB-4-END CAP	10		
2 Pole with Auxiliary											
UMBW-1	UMBW-BB-1-2A 	80A/160A	46	600 AC/DC	1009	1		UMBW-BB-1-2/3P-E CAP	10 (Sets of 2pcs)		Z12
UMBW-4	UMBW-BB-4-2A	80A/160A	46	600 AC/DC	981	1		UMBW-BB-4-END CAP	10		
3 Pole											
UMBW-1	UMBW-BB-1-3 	80A/160A	57	600 AC/DC	1009	1		UMBW-BB-1-2/3P-E CAP	10 (Sets of 2pcs)		Z12
UMBW-4	UMBW-BB-4-3	80A/160A	57	600 AC/DC	997	1		UMBW-BB-4-END CAP	10		
3 Pole with Auxiliary											
UMBW-1	UMBW-BB-1-3A 	80A/160A	48	600 AC/DC	982	1		UMBW-BB-1-2/3P-E CAP	10 (Sets of 2pcs)		Z12
UMBW-4	UMBW-BB-4-3A	80A/160A		600 AC/DC	936	1		UMBW-BB-4-END CAP	10		

Note: Bus Bars May Be Center Fed to Increase Ampacity to Double Rated Value

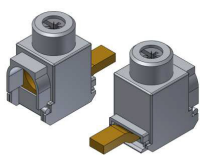
UMBW

Miniature Circuit Breakers

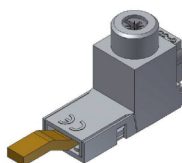
Bus Bar Accessories

For Use With	Catalog Number	AMP Rating	Number of Poles	Max Voltage	Conductor Range Min/Max	Tightening Torque	QTY		Multiplier
UMBW-1	UMBW-BB-1-1P-END CAP	N/A	1	N/A	N/A	N/A	10		Z12
UMBW-1	UMBW-BB-1-2/3-P-CAP	N/A	2 or 3	N/A	N/A	N/A	10 (Sets of 2pcs)		Z12
UMBW-1	UMBW-BB-1-1P-TERM	115A	1	1000 AC/DC	10AWG/1AWG	50 lb.in	10		Z12
UMBW-1	UMBW-BB-1-2/3P-TERM	115A	2 or 3	1000 AC/DC	10AWG/1AWG	50 lb.in	10		Z12
UMBW-1	UMBW-BB-1-BUS CAP-Y	N/A	5	N/A	N/A	N/A	10 (Sets of 5pcs)		Z12

For Use With	Catalog Number	AMP Rating	Number of Poles	Max Voltage	Conductor Range Min/Max	Tightening Torque	QTY		Multiplier
UMBW-4	UMBW-BB-4-END CAP	N/A		N/A	N/A	N/A	10		Z12
UMBW-4	UMBW-BB-4-1P-TERM	115A	1	1000 AC/DC	14AWG/2AWG	50 lb.in	10		Z12
UMBW-4	UMBW-BB-4-BUS CAP-Y	N/A	3	N/A	N/A	N/A	10 (Sets of 3pcs)		Z12



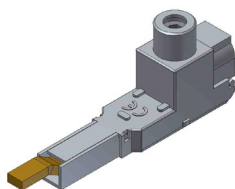
UMBW-BB-1-1-TERM



UMBW-BB-1-2/3P-TERM



UMBW-BB-1-BUS CAP-Y



UMBW-BB-4-1P-TERM



UMBW-BB-4-BUS CAP-Y